



DELL ULTRASHARP  
49 CURVED USB-C  
HUB MONITOR

# U4924DW

No gaps in productivity



**THE WORLD'S # 1  
MONITOR COMPANY\***

**DELL**Technologies

\* Dell monitors are #1 Worldwide for 8 years (2014 to 2022)! Source: IDC Worldwide Quarterly PC Monitor Tracker, Q3 2022

ULTRASHARP MONITOR

# U4924DW

## No gaps in productivity

Immerse in uninterrupted productivity with seamless view equivalent to of two 27" QHD monitors in one ultrawide curved monitor that comes with IPS Black panel for exceptional contrast.



### True immersive view

Expand your productivity with a 49" Dual QHD curved monitor with internal Multi-Stream Transport (iMST), allowing you to split your display into 2 QHD partitions. Simultaneously connect and work on 2 PCs with KVM, AutoKVM, Picture-by-Picture and Picture-in-Picture features.

### Connected productivity

Streamline your workspace with a USB-C Hub monitor that wakes and powers your laptop and allows uninterrupted connection to the Ethernet. Connect to a host of other devices with extensive connectivity. Intuitively designed quick access, pop-out front facing ports allows you to connect external devices without having to reach to the back.

### Skillfully crafted

Designed with a premium finish, this monitor with a built-in cable management system reduces cable clutter. It is adjustable to fit the way you work and be comfortable all day. Reduce low blue light emission without sacrificing color with ComfortView Plus. Built with sustainable practices for the performance you need while meeting EPEAT® Gold, ENERGY STAR® and TCO Certified Edge Displays criteria.

## ULTRASHARP MONITOR

# U4924DW

### Get twice the view

Experience multi-screen productivity via internal Multi-Stream Transport, allowing this monitor to function as two 27" QHD monitors.

### Exceptional contrast

See incredible color and superior black performance with a contrast ratio of 2,000:1 with IPS Black panel technology.

### Immersive curved screen with outstanding clarity

Dual QHD (5120 x 1440) resolution on an expansive 49" monitor.

### Fast and stable Ethernet

Get up to 2.5 GbE with RJ45 port that comes with PXE boot, Mac Address pass-thru<sup>1</sup> and Wake on Lan features. RJ45 lock feature gives you the flexibility to lock the wired Ethernet to a chosen PC while continuing to work from dual PC inputs.

Easily connect your accessories and devices with **quick access, pop-out front facing port** that can be pop-in when not in use for a flushed look.



Built-in **ComfortView Plus** reduces harmful blue light emissions without sacrificing color performance.

### True brilliance

Experience true-to-life visuals with 1.07 billion colors, and wide color gamut including 98% DCI-P3 and 98% Display P3.

### Extensive connectivity

Stay connected to multiple devices with USB-C® (up to 90W power delivery), USB-A, DP1.4 and HDMI ports.

Connect two PC sources and multitask efficiently with **Picture-by-Picture / Picture-in-Picture** and **KVM** (with **Auto KVM**).

### Adjust to your comfort

Tilt, swivel and height adjustment (120mm max).

ENERGY STAR®, TCO Certified Edge, EPEAT® Gold registered.

[Click the image or here to explore the Dell UltraSharp 49 Curved USB-C Hub Monitor](#)

ULTRASHARP MONITOR

# U4924DW

## See brilliant visuals with groundbreaking IPS Black technology

### Exceptional contrast

See incredible color and deeper blacks with a contrast ratio of 2,000:1 with IPS Black panel technology. With a wide 178°/178° viewing angle, images remain spectacular, from virtually any angle.

### True brilliance

With Dual QHD 5120 x 1440 resolution, 1.07 billion colors and a wide color gamut (100% sRGB, 98% DCI-P3, 98% Display P3) every color and detail will stand out.

### Enhanced eye comfort

ComfortView Plus — an always-on, built-in low blue light screen — reduces potentially harmful blue light emissions without compromising color.



ULTRASHARP MONITOR

# U4924DW

## Peak productivity with multitasking features

Stretch productivity with an ultrawide monitor and multitask efficiently with built-in KVM, Picture-by-Picture and Picture-in-Picture features.



### Two displays in one monitor

Expand your productivity with an ultrawide 49" Dual QHD curved screen with internal Multi-Stream Transport (iMST) that enables content from a single connected PC to be split to two true 27" QHD viewing partitions without external software or DisplayPort splitter.

### Multitask better

Connect to two PC sources and Auto KVM will seamlessly switch controls over to the second connected PC. Use KVM (keyboard, video and mouse) to control both PCs with a single mouse and keyboard.

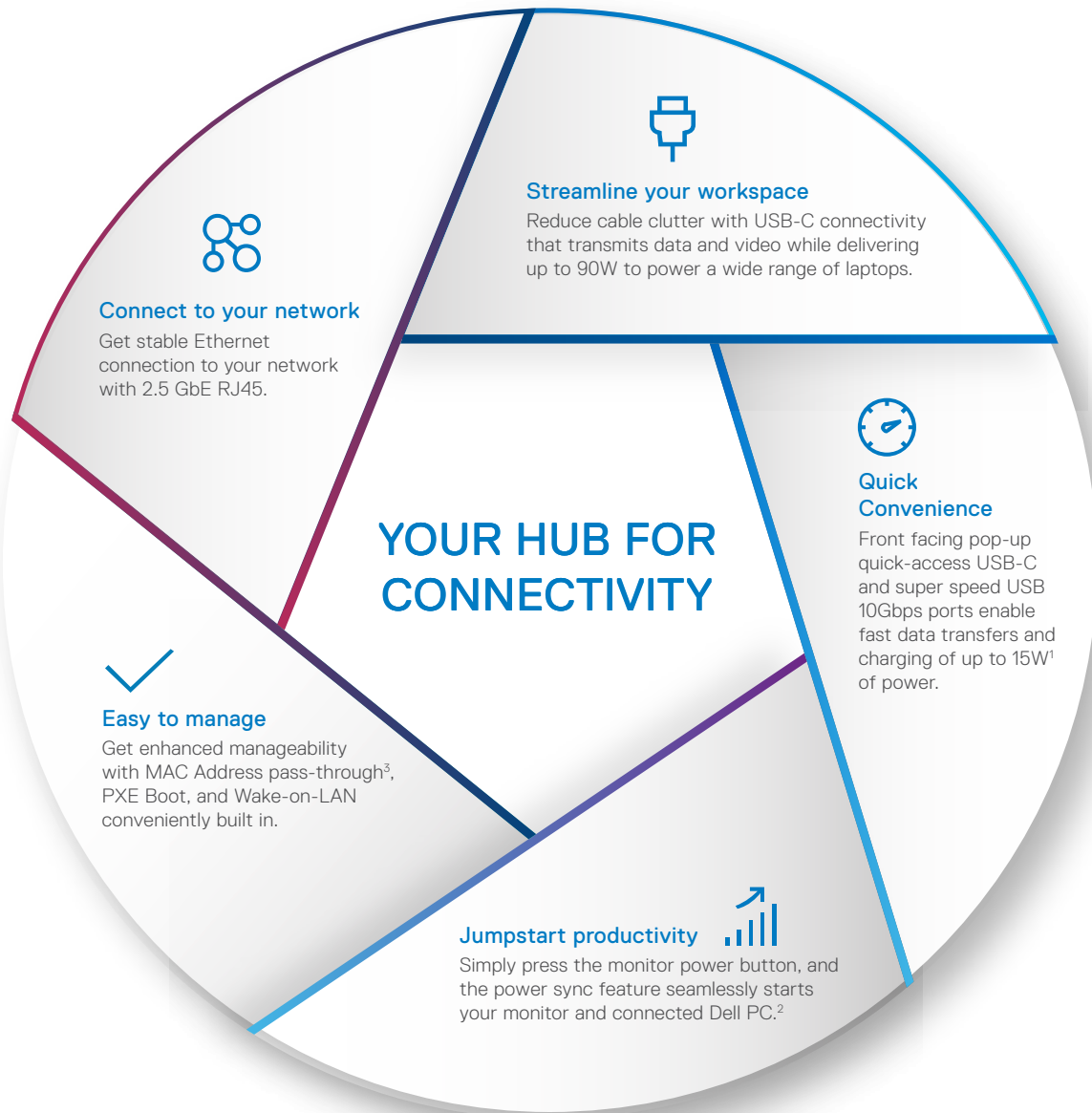
### Display content from two sources

View content from two PC sources with Picture-in-Picture (PiP) and Picture-by-Picture (PbP). KVM allows you to control both PCs with a single keyboard and mouse.

# U4924DW

## Connectivity that drives productivity

USB-C Hub monitors offer extensive connectivity options including USB-C (up to 90W power delivery), 2.5 GbE RJ45 for wired Ethernet access, super speed USB for fast data transfers, and more.



1 Via quick access USB-C port.

2 The power sync feature on this Dell USB-C Monitor enables start up and wake-on-demand on compatible Dell PCs. Please check your Dell PC to ensure support of this feature.

3 MAC Address pass-through functionality is tested to work with most Dell PC systems. Functionality on non-Dell systems may vary.

ULTRASHARP MONITOR

# U4924DW

## Sustainability on Dell Monitors

Leading the industry in sustainable practices in our products, packaging and supply chain.



### Environmental standards

This monitor is made from 85% PCR (Post-consumer Recyclable) plastic in the design<sup>1</sup>, 90% recycled aluminum<sup>2</sup> and meets the latest environmental standards such as ENERGY STAR<sup>®</sup>, and TCO Certified Edge, and are EPEAT<sup>®</sup> Gold<sup>3</sup> registered.

### Eco-conscious packaging

Dell commercial monitors ship in select packaging components made with up to 90% recycled materials.<sup>4</sup>

### Energy conservation

Save energy with PowerNap<sup>5</sup>, a feature that dims or puts your monitor to sleep when it's not in use.

1 By weight of the total weight of plastic parts in product. Excludes printed circuit boards, labels, cables, connectors, electronic components, optical components, ESD components, EMI components adhesives, and coatings.  
2 Based on internal analysis, October 2022.  
3 EPEAT registered where applicable. EPEAT registration varies by country. See [www.epeat.net](http://www.epeat.net) for registration status by country.  
4 Applies to outer box and paper cushion packaging materials, based on internal analysis, October 2022.  
5 Enabled by Dell Display Manager.

ULTRASHARP MONITOR

# U4924DW

## Designed for you

Crafted with a premium platinum silver finish, this stylish Dell UltraSharp 49 Curved USB-C Hub monitor fits both home and office environments.



### Easy-to-use

Navigate the onscreen menu and adjust settings with a convenient joystick control.

### Designed with purpose

The small base and elegant cable management system hides cords within the monitor riser.

### Work comfortably

Experience made-for-you comfort by tilting, swiveling and adjusting the height of your monitor (120mm max).

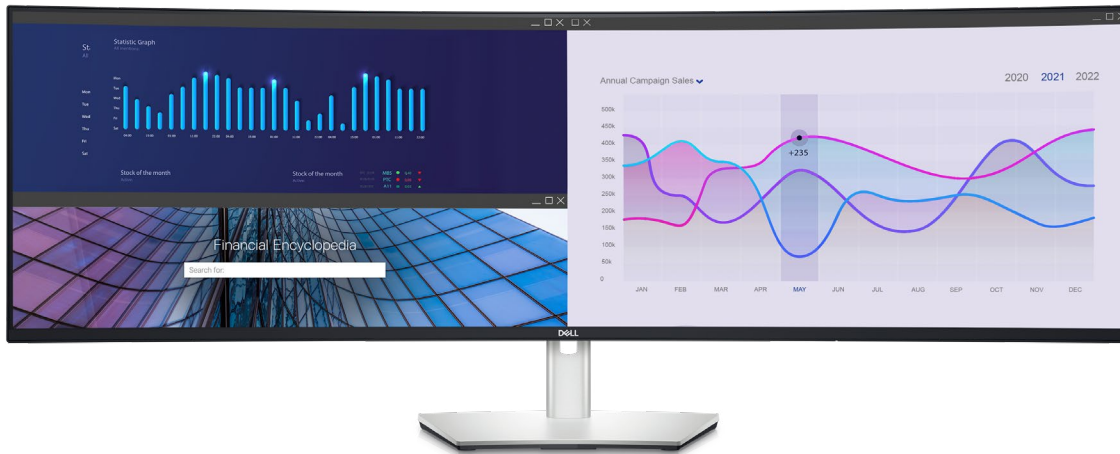




ULTRASHARP MONITOR

# U4924DW

## Dell Display Manager



### Modern Intuitive User Interface

New modern user interface for ease of use and personalization of features with Menu launcher

### Productive at every level

Easy Arrange allows you to easily tile multiple applications across one or more screens with 48 pre-set window partitions and the ability to personalize up to five windows, giving you improved multitasking abilities. Easy Arrange Memory save the placement of your programs and applications in the layouts and restore them when you select the preferred layout.

### Stay updated

Get automatic notification anytime for new updates on monitor firmware<sup>1</sup> and software.

### Optimize front of screen experience

Get uniform color experience from your monitor seamlessly by matching the color preset of the monitor<sup>1</sup> and the supported ICC profile.

### Easy setup and sharing of accessories

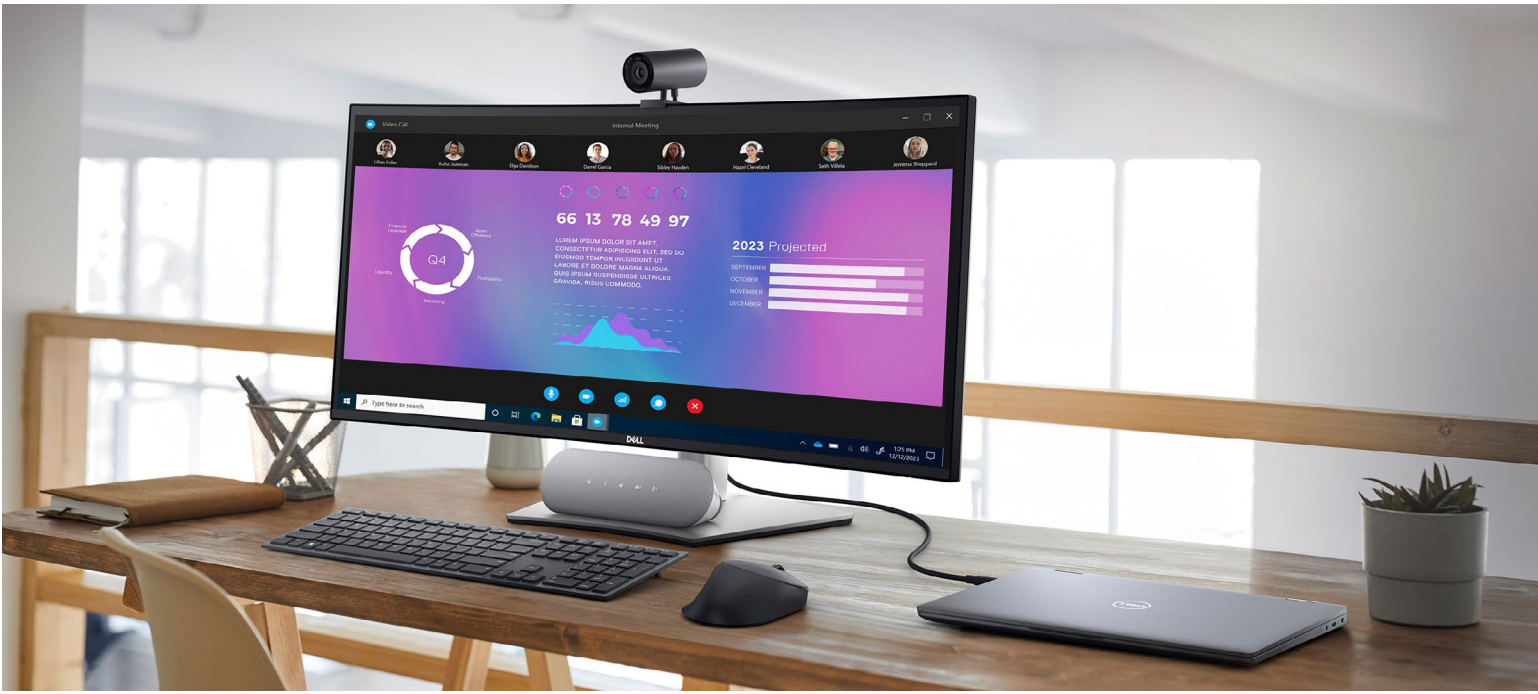
Setup a single keyboard and mouse to be shared easily between multiple PCs with USB KVM wizard.<sup>1</sup> Quick access menu or hotkey allow convenient fast switching between PCs.

### Easy deployment

DDM is compatible with management tools such as SCCM, InTune and Command Line Interface scripts for easy IT integration and deployment with asset management.

[▶ Learn more about Dell Display Manager.](#)

<sup>1</sup> Select models only.



## RECOMMENDED ACCESSORIES



### Dell Premier Multi-Device Wireless Keyboard and Mouse | KM7321W

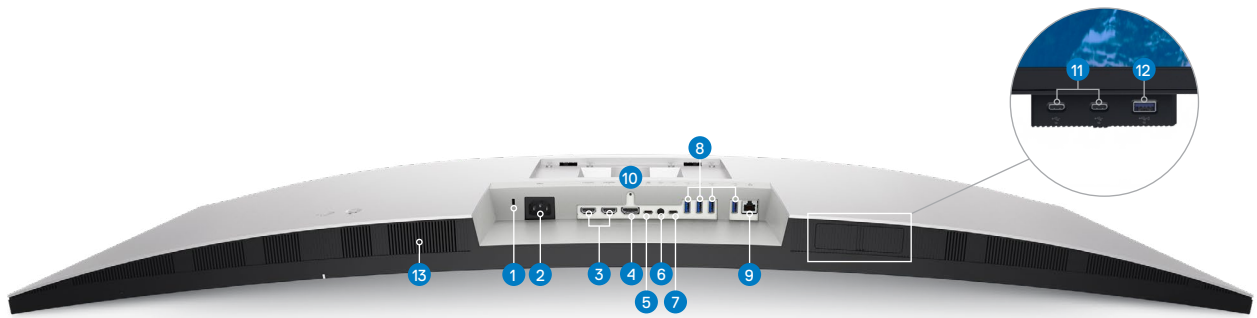
Multi-task seamlessly across 3 devices with this premium full-sized keyboard and sculpted mouse combo with programmable shortcuts and 36 months battery life.<sup>1</sup>



### Dell Premier Wireless ANC Headset | WL7022

Collaborate with ease anywhere with this Teams certified wireless headset which offers active noise cancellation and smart sensors that automatically mute and unmute your call.

## PORTS AND SLOTS



- 1 Security lock slot<sup>2</sup>
- 2 Power connector
- 3 2x HDMI
- 4 DisplayPort
- 5 1 x USB Type-C upstream port (video and data) (Alternate mode with DisplayPort 1.4, Power Delivery up to 90W)

- 6 Audio line-out port
- 7 USB Type-C upstream port (data only, SuperSpeed USB 10 Gbps, USB 3.2 Gen2)
- 8 4x USB Type-A downstream ports (SuperSpeed USB 10 Gbps, USB 3.2 Gen2)
- 9 RJ45 connector

- 10 Stand lock
- 11 2x USB Type-C, downstream ports (SuperSpeed USB 10 Gbps, USB 3.2 Gen2)
- 12 USB Type-A downstream port with power charging (SuperSpeed USB 10Gbps, USB 3.2 Gen 2)
- 13 Speakers

<sup>1</sup> Based on Dell analysis of battery life usage model calculations, Nov. 2020. Results vary depending on use, operating conditions and other factors.

<sup>2</sup> Based on Kensington Security Slot™

# ULTRASHARP MONITOR

## U4924DW

### ULTRASHARP 49 CURVED USB-C HUB MONITOR - U4924DW TECHNICAL SPECIFICATION

<b>DIAGONAL VIEWING SIZE</b>	1,244.60 cm (49.00 inches)	<b>HEIGHT WITH STAND (COMPRESSED ~ EXTENDED)</b>	400.57 mm ~ 520.57 mm (15.77" ~ 20.49")
<b>PRESET DISPLAY AREA (W X H)</b>	1,198.08 mm x 336.96 mm (47.17" x 13.27")	<b>WIDTH WITH STAND</b>	1214.90 mm (47.83")
<b>PANEL TYPE</b>	IPS Black Technology	<b>DEPTH WITH STAND</b>	269.14 mm (10.60")
<b>DISPLAY SCREEN COATING</b>	Anti-Glare with 3H hardness	<b>HEIGHT WITHOUT STAND</b>	365.95 mm (14.41")
<b>MAXIMUM PRESET RESOLUTION</b>	5120 x 1440 at 60 Hz	<b>WIDTH WITHOUT STAND</b>	1214.90 mm (47.83")
<b>VIEWING ANGLE</b>	178° vertical / 178° horizontal	<b>DEPTH WITHOUT STAND</b>	112.09 mm (4.41")
<b>PIXEL PITCH</b>	0.234 mm x 0.234 mm	<b>WEIGHT (PANEL ONLY - FOR VESA MOUNT)</b>	12.15 kg (26.79 lb)
<b>PIXEL PER INCH (PPI)</b>	109	<b>WEIGHT (WITH STAND ASSEMBLY AND CABLES)</b>	16.30 kg (35.93 lb)
<b>CONTRAST RATIO</b>	2000 to 1 (typical)	<b>WEIGHT (WITH PACKAGING)</b>	27.73 kg (61.13 lb)
<b>ASPECT RATIO</b>	32:9	<b>SECURITY</b>	Security lock slot <sup>2</sup> (cable lock sold separately)
<b>BACKLIGHT TECHNOLOGY</b>	White LED Edgelight System	<b>COMPLIANT STANDARDS</b>	<ul style="list-style-type: none"> <li>- ENERGY STAR® certified Monitor.</li> <li>- EPEAT® registered where applicable.</li> <li>- EPEAT registration varies by country. See <a href="http://www.epeat.net">www.epeat.net</a> for registration status by country.</li> <li>- RoHS-compliant</li> <li>- TCO Certified</li> <li>- BFR/PVC free monitor (excluding external cables)</li> <li>- Arsenic-free glass and Mercury-free for the panel only</li> </ul>
<b>BRIGHTNESS</b>	350 cd/m <sup>2</sup> (typical)	<b>FLAT PANEL MOUNT INTERFACE</b>	VESA mounting holes (200 mm x 100 mm (1) and 100 mm x 100 mm (2) are supported) - behind attached VESA Cover)
<b>COLOR GAMUT</b>	100% sRGB, DCI-P3 98%, Display P3 98%, REC. 709 100% (Delta E<2), 1.07 billion colors	<b>TEMPERATURE RANGE</b>	Operating: 0°C to 40°C (32°F to 104°F) Non-operating: -20°C to 60°C (-4°F to 140°F)
<b>RESPONSE TIME</b>	5 ms gray to gray in Fast mode 8 ms gray to gray in Normal mode	<b>HUMIDITY RANGE</b>	Operating: 10% to 80% (non-condensing) Non-Operating: 5% to 90% (non-condensing)
<b>HDR READY</b>	No	<b>ALTITUDE</b>	Operating: 5000 m (16404 ft) max Non-Operating: 12192 (40000 ft) max
<b>CONNECTIVITY</b>	<ul style="list-style-type: none"> <li>- 1 x DisplayPort version 1.4 (HDCP2.2)</li> <li>- 2 x HDMI ports (HDCP2.2) (supports up to DQHD 5120 x 1440 60 Hz FRL as per specified in HDMI 2.1)</li> <li>- 1 x USB Type-C upstream port (video and data) (Alternate mode with DisplayPort 1.4, Power Delivery up to 90W)</li> <li>- 1 x USB-C upstream port (data only, 10 Gbps USB 3.2 Gen2)</li> <li>- 4 x SuperSpeed USB 10 Gbps (USB 3.2 Gen2) Type-A downstream port</li> <li>- 2 x SuperSpeed USB 10 Gbps (USB 3.2 Gen2) Type-C downstream port with charging capability at 15W (maximum)</li> <li>- 1 x SuperSpeed USB 10 Gbps (USB 3.2 Gen2) Type-A with BC1.2 charging capability at 2 A (maximum)</li> <li>- 1 x Audio line-out port</li> <li>- 1 x RJ45 2.5G port</li> </ul>	<b>VOLTAGE REQUIRED</b>	100 VAC to 240 VAC / 50 Hz or 60 Hz + 3 Hz / 3.6 A (max)
<b>ADJUSTABILITY</b>	Height adjustable (120 mm) Tilt (-5° to 21°) Swivel (-170° to 170°) Slant Adjust (-2° to 2°) Pivot (NA)	<b>POWER CONSUMPTION NORMAL OPERATION</b>	0.3 W (Off Mode) <sup>3</sup> 0.3 W (Standby Mode) 45 W (On Mode) <sup>3</sup> 290 W (Max) <sup>4</sup>
<b>PBP / PIP</b>	PbP (Yes), PiP (Yes)	<b>WHAT'S INCLUDED</b>	Monitor, Stand Riser, Stand Base 1 x Power cable 1 x Type-C Gen 2 (C-C cable) - 1 m 1 x DisplayPort Cable (DP to DP) - 1.8 m 1 x (Type-A to Type-C) Gen 2 cable - 1 m 1 x HDMI cable (HDMI to HDMI) - 1.8 m Quick setup guide Safety, Environmental and Regulatory Information
<b>KEYBOARD, VIDEO AND MOUSE (KVM)</b>	Yes, KVM and Auto-KVM		
<b>DAISY CHAIN AVAILABILITY</b>	No		
<b>AUDIO OUTPUT</b>	1 x Audio line-out <sup>1</sup>		
<b>BUILT-IN SPEAKER</b>	2 X 9W		
<b>DELL DISPLAY MANAGER COMPATIBILITY</b>	Yes , Easy Arrange, Other key features		
<b>SPECIFICATIONS - SERVICE / SUPPORT DETAILS</b>	3-Year Advanced Exchange Service and Premium Panel Exchange		

1 Connect Speakers. Headphone Use is not supported for the audio line out connector.

2 Based on Kensington Security Slot™

3 As defined in EU 2019/2021 and EU 2019/2013.

4 Max brightness and contrast setting with maximum power loading on all USB ports.

ULTRASHARP MONITOR

# U4924DW

## Steadfast reliability

As the No. 1 monitor company worldwide\*, we take pride in our unyielding commitment to quality and the utmost in customer satisfaction.



### Premium Panel Exchange

Dell Premium Panel Exchange<sup>1</sup> allows a free monitor replacement during the Limited Hardware Warranty<sup>2</sup> period even if only one bright pixel is found.

### Advanced Exchange Service

This monitor comes with a 3-year Advanced Exchange Service<sup>3</sup> so that if a replacement becomes necessary, it will be shipped to you the next business day during your 3-year Limited Hardware Warranty.<sup>2</sup>

### ProSupport

Upgrade to 24x7 specialized technical phone support with the Dell ProSupport option.<sup>4</sup>

**DELL**Technologies

\* Dell monitors are #1 Worldwide for 8 years (2014 to 2022)! Source: IDC Worldwide Quarterly PC Monitor Tracker, Q3 2022

1 Applicable to Dell UltraSharp, P Series, and C Series desktop monitors.

2 For copy of Ltd Hardware Warranty, write to Dell USA LP, Attn: Warranties, One Dell Way, Round Rock, TX 78682 or see <https://www.dell.com/warranty>.

3 Advanced Exchange: Dell will send you a replacement monitor the next business day in most cases, if deemed necessary after phone/online diagnosis. Shipping times may vary by location and for monitors 55" and above. Fee charged for failure to return defective unit. See [dell.com/servicecontracts/global](http://dell.com/servicecontracts/global).

4 Availability varies, please visit [www.dell.com/support](http://www.dell.com/support) for details. In some countries, hours for in-region support may vary. Support after local business hours may be provided in a language other than the local language.

Technical specifications subject to change without prior notice. Product availability varies by country. Please contact your Dell representative for more information.

© 2023 Dell Inc. or its subsidiaries. All Rights Reserved. Dell Technologies, Dell, EMC, Dell EMC and other trademarks are trademarks of Dell Inc. or its subsidiaries. Other trademarks may be trademarks of their respective owners. USB Type-C® and USB-C® are registered trademarks of USB Implementers Forum.