

### PERFORMANCE

#### Processor

Intel® Core™ i5-12500T, 6C (6P + 0E) / 12T, P-core 2.0 / 4.4GHz, 18MB

#### Graphics

Integrated Intel UHD Graphics 770

#### Chipset

Intel Q670 Chipset

#### Memory

2x 8GB SO-DIMM DDR5-4800

#### Memory Slots

Two DDR5 SO-DIMM slots, dual-channel capable

#### Max Memory

Up to 64GB DDR5-4800

#### Storage

256GB SSD M.2 2280 PCIe® Gen 4x4 Value NVMe® Opal

#### Storage Support

Up to three drives, 1x 2.5" HDD + 2x M.2 SSD

- 2.5" HDD up to 1TB
- M.2 SSD up to 2TB each

#### Optical

None

#### Audio Chip

High Definition (HD) Audio, Realtek® ALC256VB codec

#### Speakers

2Wx1

#### Power Supply

90W 89% Adapter

### DESIGN

#### Keyboard

USB Traditional Keyboard, Black, English

#### Mouse

USB Calliope Mouse, Black

#### Expansion Slots

- Two M.2 PCIe Gen 4x4 slots (for SSD)
- One M.2 slot (for WLAN)

#### Case Color

Black

#### Stand

Vertical Stand

#### Adapter Cage

None

#### Toolless Chassis Screw

None

#### Dust Filter

None

#### Mounting

None

#### IO Box

None

#### Form Factor

Tiny (1L)

#### Dimensions (WxDxH)

Dimensions	Models
Tiny only	179 x 182.9 x 36.5 mm with rubber feet (7.05 x 7.2 x 1.44 inches with rubber feet)
Tiny & ODD	204.2 x 186.6 x 64 mm with rubber feet (8.04 x 7.35 x 2.52 inches with rubber feet)

#### Weight

Models	Weight
Tiny only	1.25 kg (2.76 lbs)
With VESA mount & ODD box	1.74 kg (3.84 lbs)

### CONNECTIVITY

#### Ethernet

Integrated 100/1000M

#### WLAN + Bluetooth®

Intel AX211 Wi-Fi® 6E, 2x2 + BT5.1

#### Front Ports

- 1x USB 3.2 Gen 2
- 1x USB 3.2 Gen 2 (Always On and 5V@2.1A charging)
- 1x USB-C® 3.2 Gen 2
- 1x headphone / microphone combo jack (3.5mm)

#### Rear Ports

- 2x USB 3.2 Gen 1 (one supports Smart Power On)
- 2x USB 3.2 Gen 2
- 1x HDMI® 2.1 TMDS
- 1x DisplayPort™ 1.4

#### Chassis Intrusion Switch

Chassis Intrusion Switch

### MANAGEABILITY

#### System Management

vPro Essential

### SERVICE

#### Base Warranty

1-year, Onsite

#### Included Upgrade

3Y Premier Support Upgrade from 1Y Onsite (5WSOT36147)

### CERTIFICATIONS

#### Green Certifications

- EPEAT™ Gold
- ENERGY STAR® 8.0
- ErP Lot 3
- TCO Certified 9.0
- RoHS compliant

#### Other Certifications

TÜV Rheinland® Ultra Low Noise

#### Mil-Spec Test

MIL-STD-810H military test passed

### SOFTWARE

#### Operating System

Windows® 11 DG Windows 10 Pro 64, English

#### Bundled Software

None

### MODEL

TopSeller	: Yes	Announce Date	: 2022-06-07
EAN / UPC / JAN	: 196801787605	End of Support	: N/A



- 1x Ethernet (RJ-45)

#### **Optional Rear Ports (configured)**

None

#### **Monitor Cable**

None

## **SECURITY & PRIVACY**

#### **Security Chip**

Discrete TPM 2.0, TCG certified

#### **Fingerprint Reader**

No fingerprint reader

#### **Physical Locks**

Kensington® Security Slot™, 3 x 7 mm

## Premier Support - A direct 24x7x365 line to our most elite technicians.



Advanced technical support, 24x7x365, in more than 100 markets



Technical Account Managers for proactive relationship and escalation management



Comprehensive hardware & OEM software support



Priority on service delivery and repair parts



Single point of contact for simplified end-to-end case management



Lenovo Service Connect Portal for customized reporting and product support

## Accidental Damage Protection - Protection of your PC from the unexpected.

Experience shows that a significant portion of devices may be damaged (and not covered under warranty) in the first three years. Lenovo's Accidental Damage Protection service covers accidents beyond the system warranty such as drops, spills, bumps and even electrical surges. Make sure your new device has maximum protection, avoid unplanned costs and get peace of mind.

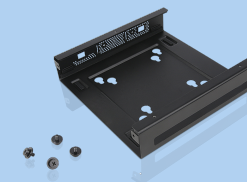
## Base Warranty - Included with the systems you purchase, default 1- or 3-year coverage window.

## Warranty Extensions & Upgrades - Service and protection that's right for your circumstances.

- Pick Up & Return Courier
- Onsite Support
- Technician Installed Customer
- Replaceable Unit Service
- International Warranty Upgrade

Lenovo may not offer the products, services or features discussed in this document in all regions. Lenovo may withdraw an offering at any time. Information is subject to change without notice. Consult your local representative for information on offerings available in your area. Lenovo reserves the right to change specifications or other product information without notice. Lenovo is not responsible for photographic or typographical errors. Lenovo provides this publication "as is" without warranty of any kind, either express or implied, including the implied warranties of merchantability or fitness for a particular purpose.

## Recommended Accessories



### ThinkCentre Tiny VESA Mount II

4XFON03161

The ThinkCentre Tiny VESA Mount II is a unique design specific to house the Tiny PC while featuring the universal VESA mount configuration. The VESA standard enables this mount to attach to anything that is VESA comp...



### Kensington MicroSaver 2.0 Cable Lock from Lenovo

4XEON80914

Protect your device. Lenovo offers the latest standard in device security - the MicroSaver 2.0 Cable Lock From Lenovo. Engineered to be the smallest, strongest lock for laptops and other devices, the MicroSaver 2.0 re...

For a full list of accessories and services, please visit:  
<https://smartfind.Lenovo.com>

**Lenovo**

**PSREF**  
Product Specifications  
Reference